



NELSON WEDDING
VENUES

WELCOME!

Here's your guide to choosing a fabulous wedding venue in the Nelson–Tasman region.

These ten listed locations host dozens of weddings every year. On the following pages their contact details are listed for your convenience. Over the past decade we have shot and filmed many couples get married at these magnificent spots.

When searching for wedding venues in this corner of the country, couples are spoilt for choice. Possibilities range from intimate garden ceremonies to grand celebrations by the sea. Vineyards, hotels, beaches, hilltops and historic houses all make for brilliant destinations.

Because of their popularity, they are often booked 12–18 months in advance. This is particularly true over the busy season, which is November–March.

Your choice of location will depend on several factors:

- Your Budget
- Style of wedding (traditional, modern)
- Guest count
- Ceremony & Reception combo
- In-house catering
- Accommodation
- Wet-weather alternatives
- Parking & travel times

Also, when you make an enquiry, ask about catering options, as well as hidden costs, such as cleaning, furniture hire, etc.

Regarding wedding photography, you need to decide what sort of backdrop you want for your photos – darker green foliage in gardens or forest settings – or airy, bright coastal spots with a beachy vibe and scenic views.

Your photographer will help you plan a timeline ('run sheet') of the wedding day, allowing enough time for photo shoots at various locations.

INDEX

01	Appleby House & Rabbit Island Huts.	05
02	Gardens Of The World.	07
03	The Playhouse Cafe & Theatre	09
04	The Honest Lawyer	10
05	The Boathouse	11
06	Aurora Lounge, Nelson Yacht Club.	12
07	Founders Heritage Park.	13
08	The Summer House	14
09	Fairfield House	15
10	Melrose House	16



ABOUT

Hey there! I'm a local photographer, videographer, author and graphic designer.

My wife, cat, and I love living in the heart of Nelson city, tramping the hills, reading books by the beach, running the trails, or sipping coffee at a cafe.

As an enthusiastic promoter of the region, I've created this location guide for you. I hope you find it helpful.



Ray Salisbury
Wedding Photographer



NELSON WEDDING VENUE LOCATIONS



1 Appleby House & Rabbit Island Huts

Nestled on 25 acres of land on the Waimea Plains, this calm and serene oasis boasts 360-degree views of Mt Arthur and the Richmond Ranges.

Luxury accommodation in the two-storey house features five bedrooms, three bathrooms, two lounges and a kitchen – ample space for a bridal party to sleep over, or prepare for the big day.

At the eastern end of the property half a dozen rustic huts are set in a circle with shared facilities – ideal to house the groom and his mates. Glamping options are also available.

Central to everything is an arbor where wedding ceremonies face the sun. Close by a three-sided reception hall is the perfect place to celebrate late into the night. No chance of waking up the neighbours out here! Surrounded by farmland, there is ample parking available.

HIGHLIGHTS

♥ **Photography.** This venue is perfectly positioned in the countryside, a few minutes from Rabbit Island, a favourite destination for wedding photography. You have the best of both worlds: bush and beach, which gives a variety of backgrounds in your images. Being so handy, this means more great photos, and less time away from your family and friends.

♥ **Weather.** In the unlikely event that Nelson's famed sunshine fails, the reception hall is in close proximity, and marquees can also shelter guests.



CONTACT

Web: www.applebyhouse.co.nz

Email: visit@applebyhouse.co.nz

IG :applebyhouse_rabbitislandhuts

Phone: 027 6632 639

Address: 305 Redwood Rd, Appleby,
Tasman, 7081



2 Gardens Of The World, Hope

If you're thinking of a garden wedding, this is the venue for you. With six acres of designer gardens, this family property sports a mirror lake, streams, bridges, fountains, formal gardens and sweeping lawns – the ultimate backdrop for wedding photography and family formal portraits.

From the billowy blooms in the rose garden to the dappled light of the birch grove; from the lily pond boardwalk to the wonder of the white garden at night. In between you'll find arbors, stone bridges, a herbarium, edgy cacti beds, and native New Zealand forest.

Nelson is known as New Zealand's sunshine capital, however, if the forecast is poor, this venue offers a brilliant alternative – a large lakeside marquee to shelter 100 people. This huge tent doubles as a great reception venue, keeping everyone together from the wedding breakfast to the late night dancing.

As well as toilets, there is ample parking available.



HIGHLIGHTS

♥ **Photography.** Gardens of the World is popular for good reason. The large lawn makes for a lovely ceremony location, facing the lake, surrounded by mature trees. The nearby bank is useful for large group photos, while your guests try out cocktails or canapes. Your photographer can lead you to a number of scenic spots to shoot those gorgeous portraits you'll want framed on your wall.

♥ **Weather.** In wet weather, a huge marquee will provide shelter for the ceremony, as well as the reception afterward.



CONTACT

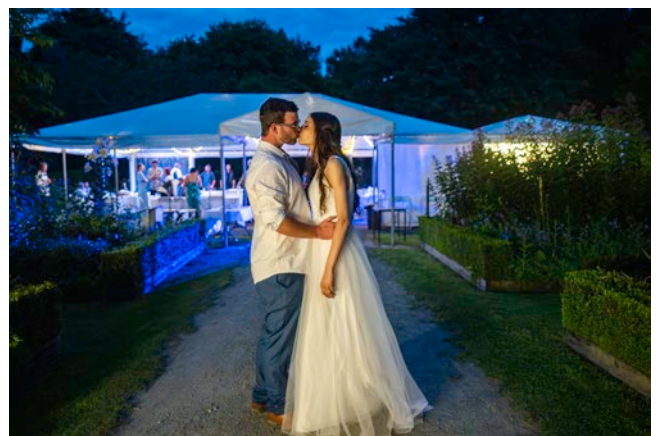
Web: www.gardensoftheworld.co.nz

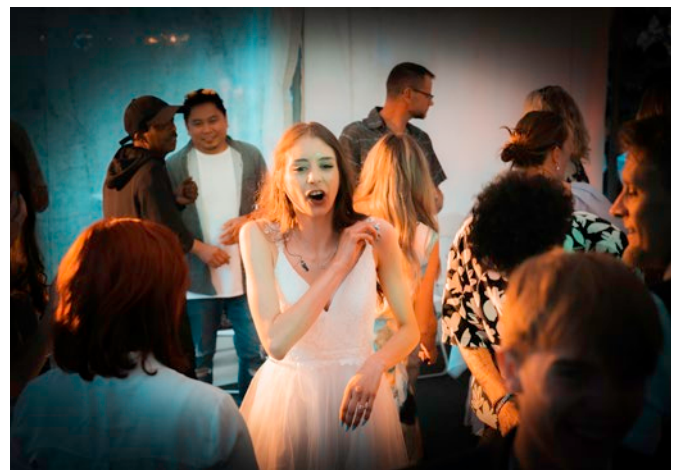
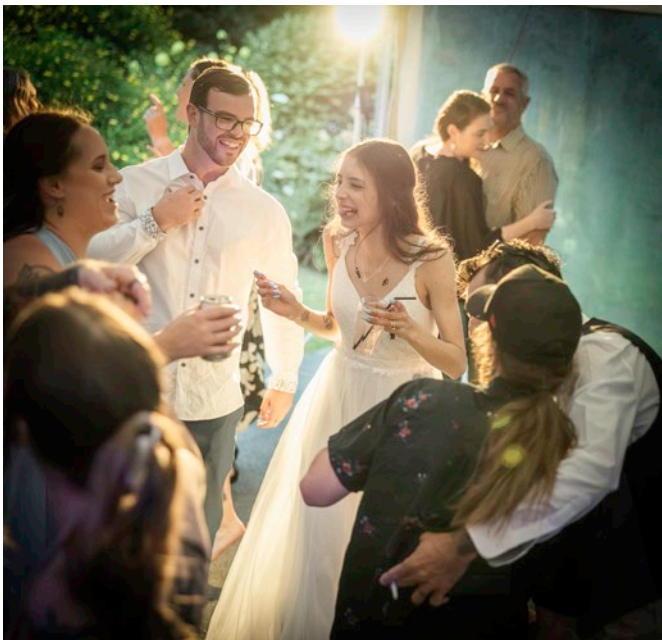
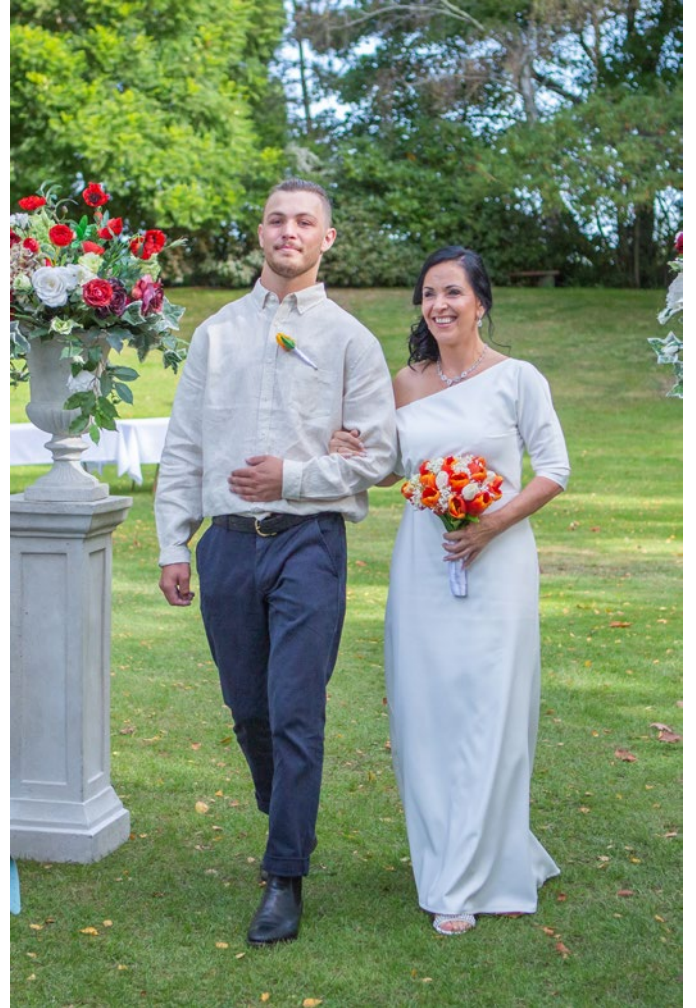
Email: info@gardensoftheworld.co.nz

IG: gardensoftheworld

Phone: 027 6011 533

Address: 95 Clover Road East Hope,
Richmond 7031, Nelson





3 The Playhouse, Mapua

This must be the most unique and enchanting wedding venue in Nelson. The moment you walk through the entrance archway you'll realise that you are in a quirky place, full of artistry and surrounded by lush gardens.

Located only 20 minutes from the city, this sheltered, secluded locale is perfect for an intimate wedding.

Ceremonies are held under the weeping willow near a dreamy pond and rustic bridge. Your guests will enjoy the lavish garden and decking area before heading inside.

Reception dinners in the well-decorated restaurant are prepared on-site by the co-owner/chef Manuela who will create the perfect menu – from a five-course menu to a simple kiwi BBQ.

Total capacity is about 110 people with ample parking and excellent bathroom facilities. Also included is the use of the stage, full PA, mics, lights, DJ booth, and projector.

CONTACT

Web: www.playhousecafe.co.nz

Email: theplayhousecafeNZ@gmail.com

IG: playhouse_theatre_nelson

Phone: 03 540 2985

Address: 171 Westdale Road, (off SH60 near Mapua) Richmond 7081

HIGHLIGHTS

♥ **Photography.** While this wonderful property has a few locations for a family group portrait session, a short drive to Mapua or Rabbit Island will give you a better variety of backgrounds for your photo shoot.

♥ **Weather.** If it begins to rain, your outside ceremony can be held inside the restaurant-cafe at short notice.



4

The Honest Lawyer, Monaco

Only 10 minutes drive from Nelson airport, this character English country pub packs a lot into it's charming establishment. The buildings sit above the tranquil shoreline of the Waimea Estuary, reflected like a mirror on a calm day.

Behind the pub are a number of facilities you can use... The Rustic Barn, the Point, the Banquet Room, and the courtyard.

Guest rooms can accommodate the married couple, either before or after the wedding.

An outdoor ceremony is ideal, at the very end of The Point, with stunning views over the water to Monaco Peninsula, then beyond to the mountains of Kahurangi National Park. If inclement weather is forecast, the Barn is a good backup, and is also handy for your reception.

Alternatively, the Banquet Room evokes the Old English style and offers a serviced bar and a private courtyard. This can be used as an intimate setting for exchanging your vows or as an evening dance floor. Bi-fold doors create a seamless indoor-outdoor flow.

HIGHLIGHTS

♥ **Photography** at this Nelson landmark is easy, with both rustic architecture or beautiful coastal views on offer. The spacious shoreline and jetty on the adjacent Monaco Peninsula is also a great place for shooting memorable photos.

♥ **Weather.** The Rustic Barn is often used for ceremonies and receptions. Plus, there's also ample room to erect a large marquee on the lawn.



CONTACT

Web: honestlawyer.co.nz

Email: info@honestlawyer.co.nz

IG: honestlawyernz

Phone: 03 547 4070

Address: 1 Point Road, Monaco

5 The Boathouse, Nelson

From Wakefield Quay, enter the main hall and walk through folding doors that seamlessly blend the indoor and outdoor spaces. Here, on the promenade deck, take in a breathtaking panorama of the Nelson Haven and Tasman Bay, with the majestic Arthur Range skyline serving as a grand backdrop.

This venue boasts a fully-equipped and licensed bar, a commercial kitchen, and a talented in-house team of function managers, front-of-house and service staff, head chef, and catering professionals. With amenities such as a stage, stackable chairs, tables, outdoor furniture, PA system, heating, and even a gas barbecue, you'll have everything you need for the wedding of your dreams.

CONTACT

Web: www.theboathousenelson.co.nz

Email: info@theboathousenelson.co.nz

IG: boathousenelson

Phone: 03 548 7646

Address: 326 Wakefield Quay, Nelson

HIGHLIGHTS

♥ **Photography.** Although it's not large, smaller-sized weddings fit in nicely on the promenade deck. An unrivalled ocean view is the show-stopper backdrop. However, an additional location may be needed to add more variety to your photos or videos.

♥ **Weather.** In wet weather, your ceremony and reception can both be held inside the restaurant. This keeps everyone together for the duration of the wedding.

♥ **History.** Built in 1906 by the Nelson Rowing Club, the building became a popular dance hall in the 1940s. Now totally refurbished, this heritage building is a regular haunt of talented musicians and bands.



6

Aurora Lounge, Nelson Yacht Club

Established in 1857, this is New Zealand's first sailboat club. Today, above the bustling club activity, the premises hosts a Thai restaurant and the spacious Aurora Lounge, an expansive 14m x 15m function room, well-suited for wedding parties of 60–140.

A high balcony grants stunning views across the Nelson Haven to The Boulder Bank and beyond. The harbour is busy, so there's always something interesting going on on the water.

At the Aurora Lounge you hire a relatively blank canvas which allows you to bring your own creativity and flair to style your event. Or you could bring in the experts. Nourish Catering can tailor menus to suit your budget for everything from full wedding breakfasts, through to standing dinners or grazing tables.

HIGHLIGHTS

♥ **Photography.** This venue is usually used for wedding receptions at day's end, when the setting sun illuminates the panoramic harbour view. Inside, the Aurora Lounge has an upstairs balcony to give your photographer that extra birdseye view.

Outside the venue is a boatramp which is perfect for Golden Hour portraits. Or if you're adventurous, take the ferry across the harbour to visit the lighthouse.



CONTACT

Web: <https://venue.nelsonyachtclub.org.nz>

Email: manager@nelsonyachtclub.org.nz

IG: nelsonyachtclub

Phone: 022 548 7501

Address: 322 Wakefield Quay
Nelson 7010



7

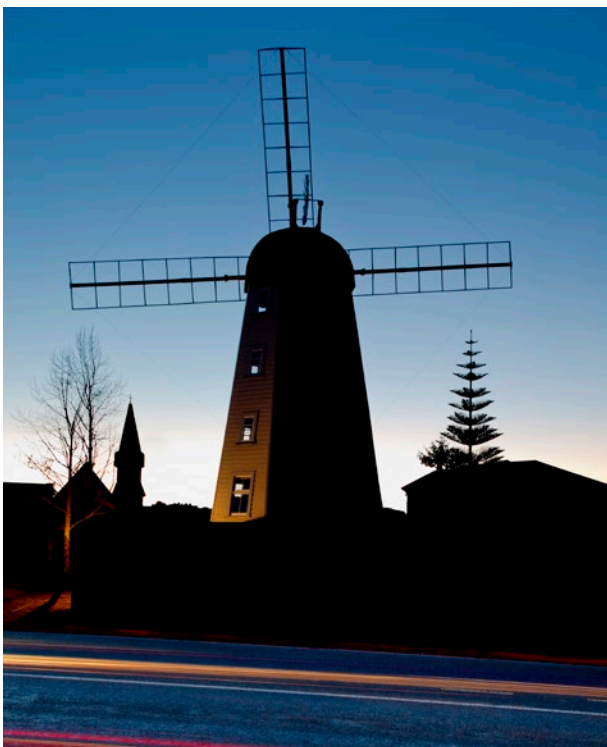
Founders Heritage Park, Nelson

Getting hitched at this expansive property is a journey through time. Guests can wander through a storybook village of quirky character buildings and gardens. For your wedding ceremony, there's three options.

Firstly, built in the late 19th Century, old St Peter's is a charming church that offers a traditional setting for your special day. The interior features classical furniture, including authentic pew seating, which adds a romantic atmosphere. The clock tower stands as a striking architectural feature and a symbol of the town's rich history.

Secondly, try The Granary: this beautiful heritage building oozes charm and caters for up to 150 seated guests, with an antique bar and full commercial kitchen. Hang fairy lights around the grand pillars or spill out onto the green to enjoy cocktails in the afternoon sun. Dance the night away on the polished wooden floor.

Alternatively, hire the full park! This books out the entire property, so you're not sharing it with any other events.



CONTACT

Web: www.founderspark.co.nz

Email: founderspark@ncc.govt.nz

IG: [foundersparknelson](https://www.instagram.com/foundersparknelson)

Phone: 03 548 2649

Address: 87 Atawhai Drive, The Wood, Nelson 7010

HIGHLIGHTS

♥ **Photography.** Founders Park offers a plethora of interesting backgrounds; from doorways, bright coloured walls, rustic transport, to spacious lawns – it's a photographer's paradise.

♥ **Weather.** In wet weather, your ceremony and reception can be held inside The Granary.



8

The Summer House, Atawhai

High in the hills behind Nelson city, The Summer House sits on a grassy shelf overlooking the Nelson Haven, and beyond toward Mt Arthur on the distant horizon.

The elegant reception hall accommodates up to 150 guests alongside a full kitchen, spacious toilet block, and a sweeping infinity lawn that flows seamlessly towards the ocean.

Guests can enjoy outdoor lawn games while drinking in panoramic views. The impressive 18-metre pergola room, enclosed in clear perspex, offers a stunning 360-degree perspective of the surrounding natural beauty.

Visitors can also explore 500 acres of native bush and farmland. A helipad allows couples to travel elsewhere for a romantic photo shoot.

Situated on a working farm only 10-minutes from the CBD, this idyllic hilltop setting is suitable for big luxury weddings. A professional event planner and experienced staff ensure every detail is perfect.

CONTACT

Email: thesummerhousenelson@gmail.com

IG: the_summer_house_nelson

Phone: 022 047 9196

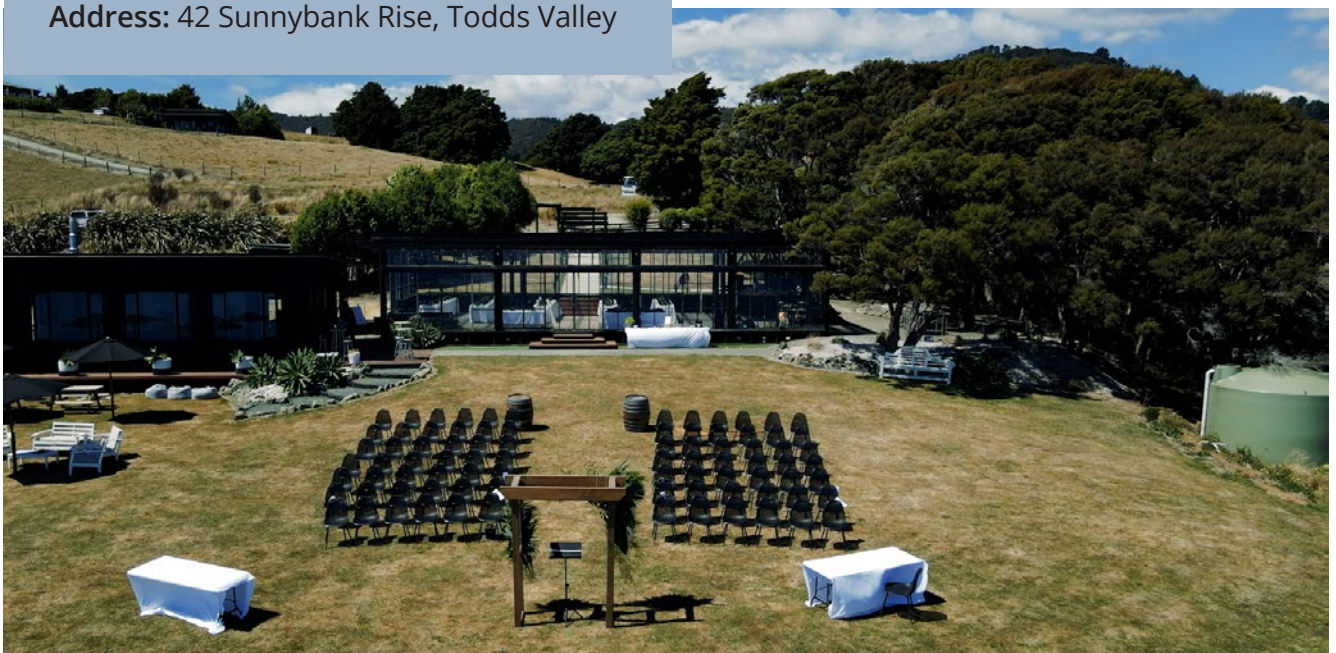
Address: 42 Sunnybank Rise, Todds Valley

HIGHLIGHTS

♥ **Photography.** Weddings at The Summer House are extravagant, and this spectacular setting makes for beautiful images, as photographers can shoot into the light, particularly during the ceremony, with the city and ocean far, far below in the background.

While there's only a few spots to shoot intimate portraits in the bush or paddocks nearby, alternative scenery can be obtained during a helicopter flight to the coast.

♥ **Weather.** The reception hall can double as the site for an indoor ceremony.



9 Fairfield House, Nelson

This antique villa is nestled in seven acres of enchanting woodlands and gardens, and is one of Nelson's most prestigious historic homes.

Fairfield was home to the Atkinson family from 1872 until 1922 when the property became a boarding house for college students. Atkinson was a prominent lawyer who erected the distinctive tower to mount a large telescope to cater for astronomy. His wife Jane was active in the suffragette movement.

Today, this grand setting features a variety of spaces that can be tailored to suit your unique style and vision. Ceremonies are often performed on the manicured lawn, surrounded by bush. Hidden behind the house, a paved courtyard is perfect for guests to enjoy a banquet, before heading indoors to the ballroom to begin the evening entertainment.

CONTACT

Web: www.fairfieldnelson.org.nz

Email: gather@fairfieldnelson.org.nz

IG: fairfieldhousenelson

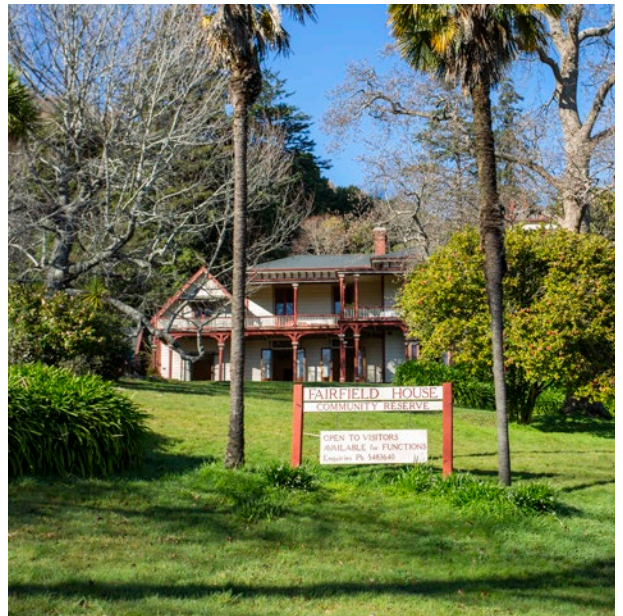
Phone: 021 591 906

Address: 48 Van Diemen Street, Nelson

HIGHLIGHTS

♥ **Photography.** Private ceremonies in the upper garden feature a green backdrop. There's a few spots for family photos as well as portraits of the bridal party. Queens Gardens is in close proximity for variety.

♥ **Weather.** With a massive heritage house on-site, there's ample room to head indoors if needed.





10 Melrose House, Nelson

Set within meticulously-maintained gardens, Melrose House is an enchanting place that combines timeless elegance with rich history. Among the last surviving historic mansions in Nelson, it exudes sophistication and grandeur. Beautiful Victorian architecture adds a touch of vintage charm, its interiors feature sumptuous decor and abundant natural light. With on-site parking and fabulous catering options available, Melrose House is synonymous with convenience and luxury.

HIGHLIGHTS

♥ **Photography.** The park-like premises are great for intimate portraits, or a smaller outdoor ceremony. The villa makes for a great formal photograph.

♥ **Weather.** With a massive Victorian villa, there's the option to head indoors if the weather turns foul.

CONTACT

Web: www.melrosecafe.co.nz

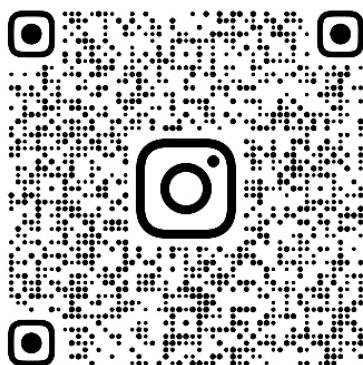
Email: MelroseCafeInquiries@gmail.com

IG: melrose.cafe

Phone: 03 548 7269

Address: 26 Brougham Street, Nelson

FOLLOW US ON INSTAGRAM



@MOVINGMOMENTSNZ

movingmoments
PHOTO+VIDEO